

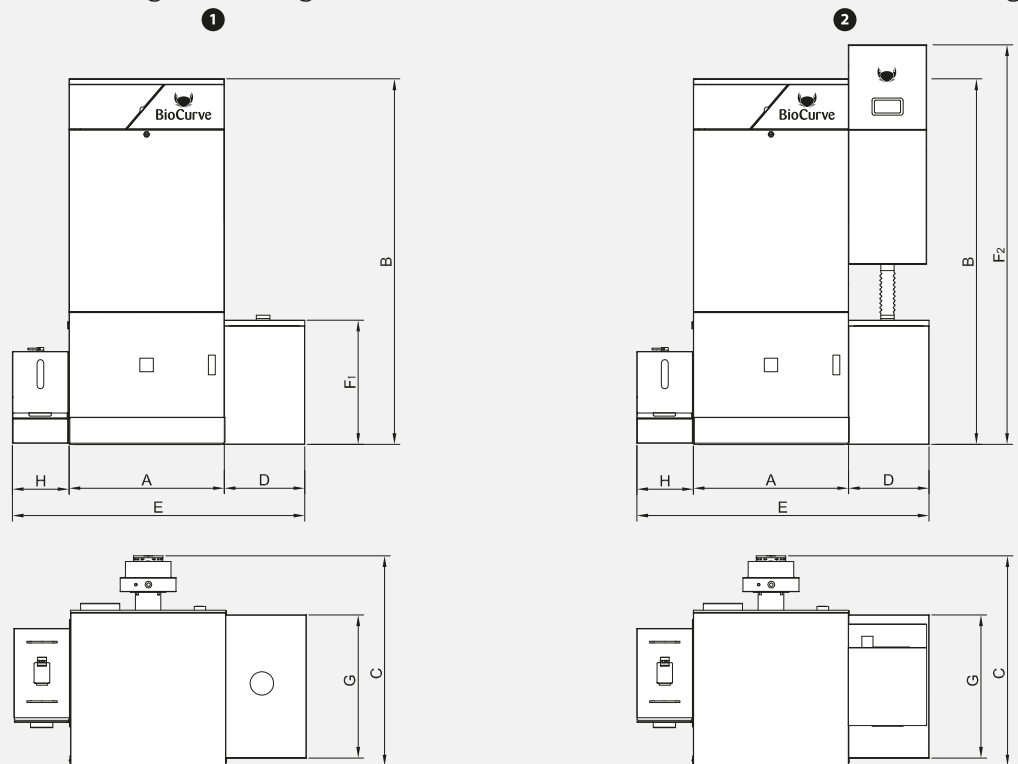
# Technical specifications



**A++**

Automatic auger feeding

Automatic vacuum suction feeding



## The pellet condensing boiler BCH 25-150 kW

# 105%

Thermal efficiency based on the L.H.V. of the fuel

### Stunning performance

- Unbeatable efficiency
- Minimum fuel consumption
- Lowest emissions
- Unique dual temperature setpoint
- Wide temperature range
- Reduced maintenance time

### Outstanding equipment

- Stainless steel heat exchanger
- Burner plate smart cleaning
- Automatic ignition system
- Automatic exchanger cleaning
- Remote control via Smartphone
- Ash extractor to removable drawer
- Lambda probe
- Graphic colour touchscreen



Boiler model		BCH25	BCH30	BCH40	BCH50	BCH60	BCH70	BCH80	BCH100	BCH125	BCH150
Output range	kW	7,5-25	9-30	12-40	15-50	18-60	19-66	24-80	30-100	37-125	45-150
Energy efficiency class		A++	A++	A++	A++	A++	A++	Regulation applicable on solid fuel boilers with a rated heat output of 70 kW or less			
Energy efficiency index (EEI)		128	128	127	127	128	128				
Seasonal energy efficiency	$\eta_{son}$	91	91	91	90	91	91				
Efficiency at nominal/reduced output *	%	101,5/100,5	101,5/100,5	101,8/98,8	102,0/97,7	102,7/98,5	102,4/98,2	104,2/100,0	105,7/101,8	105,1/101,0	103,5/100,3
Flue gas manometric pressure at nominal/reduced output	Pa	8/5	8/5	8/5	8/5	8 / 5	8/5	8/5	8/5	8/5	8/5
Flue gas Temperature at nominal/reduced output	°C	50 / 38	48/38	46/39	44/40	44 / 40	45 / 41	42/39	39/37	39/37	43/41
Water capacity	l	78	78	112	112	112	112	213	213	213	213
Operating temperature	°C	27-80	27-80	27-80	27-80	27 - 80	27-80	27-80	27-80	27-80	27-80
Maximum operating pressure	bar	3	3	3	3	3	3	5	5	5	5
Water flow/return connection	"GAS/M	1 1/4"	1 1/4"	1 1/2"	1 1/2"	1 1/2"	1 1/2"	2"	2"	2"	2"
Water drain connection	"GAS/M	1/2"	1/2"	1/2"	1/2"	1/2"	1/2"	3/4"	3/4"	3/4"	3/4"
Flue gas pipe diameter	mm	150	150	200	200	200	200	200/250**	200/250**	250	300
Total dry weight 1 2	kg	400/425	400/425	430/455	430/455	430/455	430/455	675/700	675/700	690/715	690/715
Dimension A	mm	695	695	695	695	695	695	845	845	845	845
Dimension B	mm	1465	1465	1665	1665	1665	1665	1710	1710	1710	1710
Dimension C	mm	850	850	850	850	850	850	1105	1105	1105	1105
Dimension D	mm	350	350	350	350	350	350	350	350	350	460
Dimension E	mm	1295	1295	1295	1295	1295	1295	1445	1445	1445	1445
Dimension F1/F2	mm	555/1615	555/1615	555/1815	555/1815	555/1815	555/1815	555/1860	555/1860	555/1860	555/1860
Dimension G	mm	640	640	640	640	640	640	640	640	640	640
Dimension H	mm	250	250	250	250	250	250	250	250	250	250
EN 303-5:2012	Class	5	5	5	5	5	5	5	5	5	5



CEEI-Aragón nave 8  
Calle María de Luna 11  
50018 Zaragoza (Spain)  
T. +34 976 516 633  
www.biocurve-heating.com



This Project has received funding from the European Union's Horizon 2020 research and Innovation programme SME Instrument under grant agreement No 738569



BioCurve boilers work best with ENplus A1 sealed pellets, under EN14961-2 standards

\* Efficiency based on the lower heating value (L.H.V.) of the fuel

\*\* Depending on working conditions



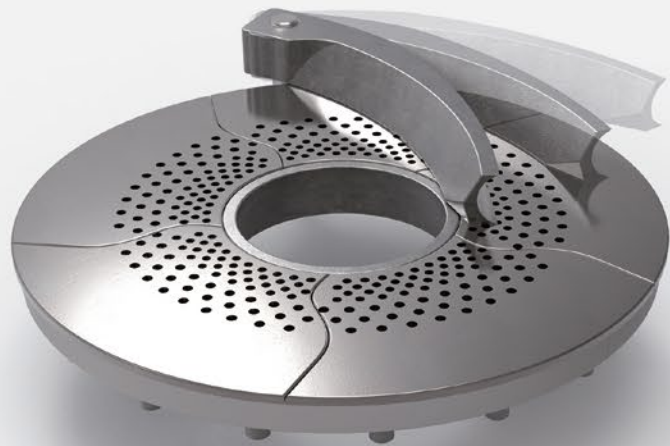
**10** years warranty  
for the boiler shell  
(ask for conditions)



**Automatic cleaning by water jets,** enabling an optimal energy yield for a long time.

**Patented heat exchanger**  
The only biomass spiral heat exchanger, made completely of stainless steel, holds an exchange surface up to 50% larger than a standard exchanger.

**Return temperature without constrains**  
BCH boilers work smoothly under any condition, either condensing or non-condensing.



**Patented burner**  
The first rotating underfed burner with self-cleaning system allows a perfect combustion at each power step.

**Ash extractor and compactor**  
wich guides ashes to a removable ash box, making even easier BCH's use.

**Remote management via Smartphone**

The most comfortable way of managing the boiler. Ignition, setup control and recorded operating hours anytime, anywhere.

## Dual control

A permanent optimal combustion thanks to the dual control of lambda probe and chamber temperature sensor.

**27°C + 80°C**

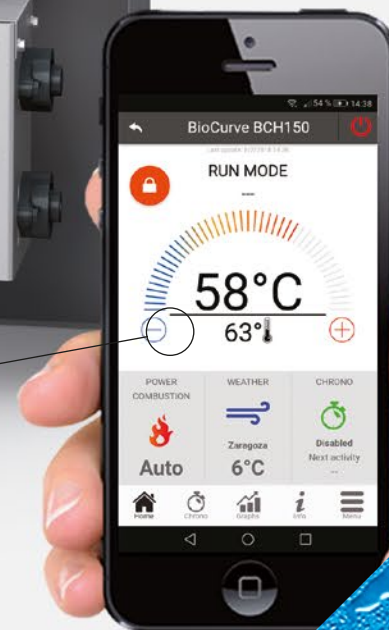
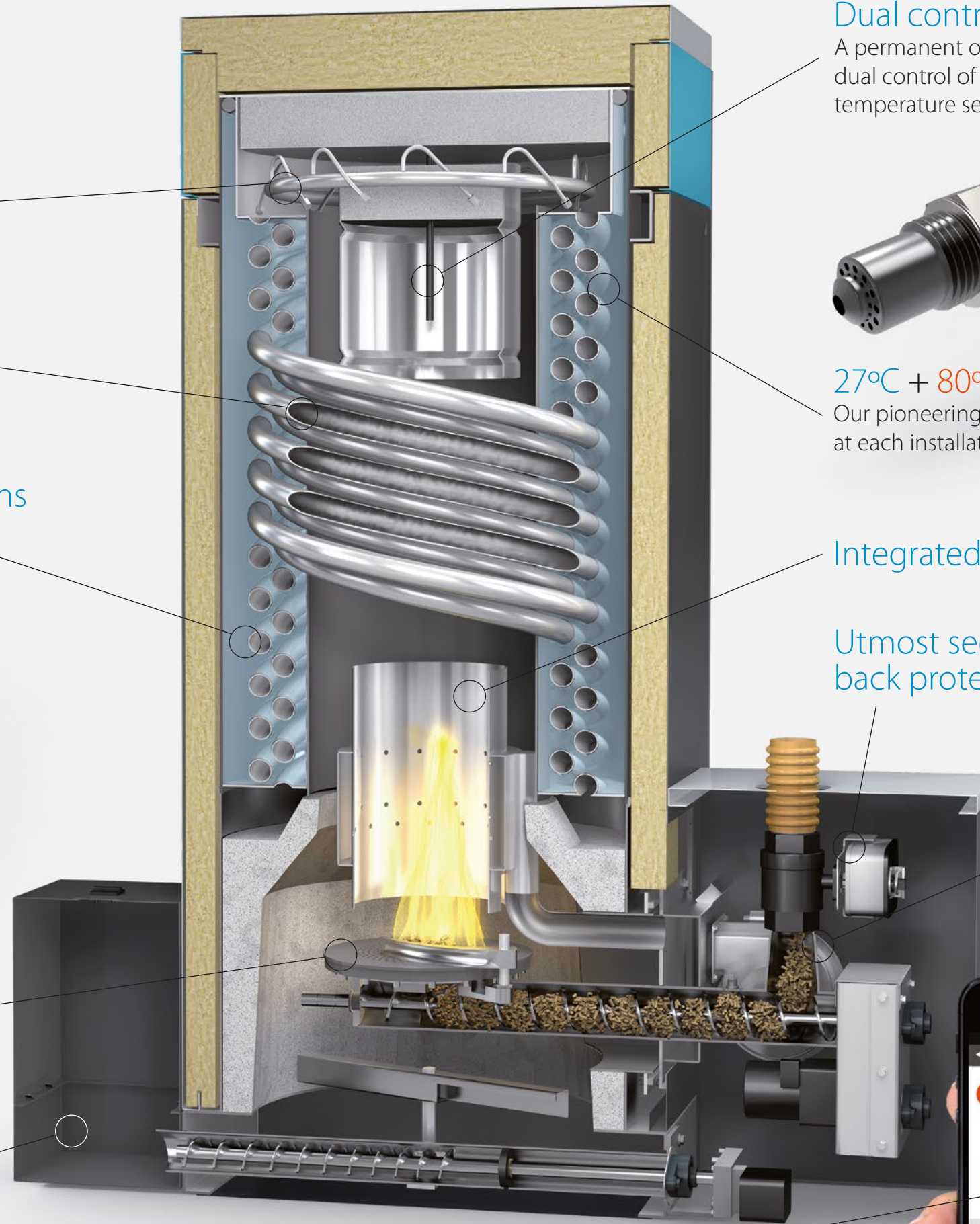
Our pioneering biomass dual setpoint allows the perfect performance at each installation need, from 27°C to 80°C.

## Integrated secondary combustion

Utmost security thanks to the burn back protection

## Electronically controlled primary combustion

The electronic fan, controlled by a 0-10 Vdc signal, improves up to 3% the efficiency at minimum power.



CLASS

**5**

EN 303-5